

Other communication options

EMD

This probe is meant for detecting the environmental conditions of the UPS and allows from a distance to monitor the temperature and the moisture rate of the room.

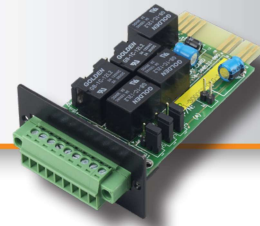
This probe is connected to the SNMP card, and can also be used to send dry contacts, this being compatible with security or alarms systems.



Dry contact card AS400

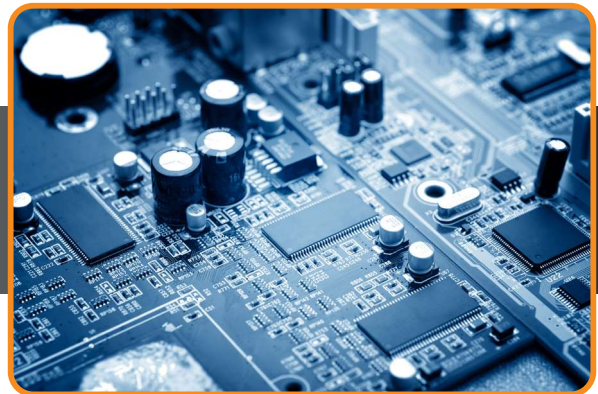
The AS400 communication card sends dry contacts to report the alarms triggered in the UPS (for centralized technical managements for example).

Depending on the applications, dry contacts can be normally open or normally closed.



Modbus card

An RS 485 card can be added in order to allow the UPS to communicate with installations using industrial protocols on long distance.



NETWORK MANAGEMENT

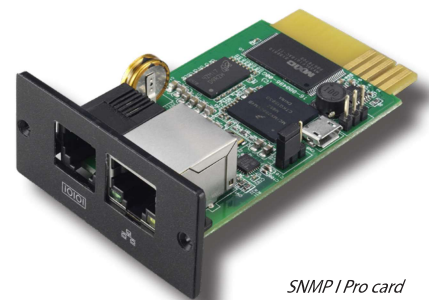
SNMP agent & ViewPower Pro

Using **SNMP agent** allow to integrate the UPS in the computer network of the company by assigning it an IP address.

It is easier to control and manage the UPS on the network




The network management system is composed of 2 elements (software + material) which allow the transmission of the management information between users and managed devices :

- Manager (software)
- Integrated or external cards as described below :



SNMP I Pro card

Available agents and mode of installation

Internal ref	Model	Visual	Compatibility	Installation type
61156	SNMP I Pro		E3 Performance RT E3 Pro RM / RT E4 LCD Pro / TM E4 Pro One E4 Evolution II TT E6 LCD TM RM E7 One RT Mod3 Mod5T / Mod5T E	Integrated
61812	SNMP II Pro		E3 Live	Integrated
61830	SNMP I Pro RS232 (external)	-	All UPS equipped with RS232 port	External (RS232 port)
61823	DY 630 USB		All UPS equipped with USB port	External (USB port)

Advantages

- **Management of several UPS** on a local network
- **Detection of the temperature and humidity** via connecting to EMD (Environmental Monitoring Device)
- **Monitoring of the UPS status**
- **Setting a closing «clean»** of the running applications and a system shutdown before the end of the back-up time of the UPS in case of power failure
- **Schedule the start-up and shutdown of the UPS**, providing the best possible protection for your information system
- **Records data and events**
- **E-mail communication**, which lets you remotely manage the UPS status.
- For the management of virtual servers, **compatible with vmWare®** : ESX 3.5 & 4.1 - ESXI 4.1/5.0/5.1 & 5.5

COMPATIBILITIES

Operating Systems of software solutions	
Windows	2000 / XP / 2003 / Vista/ 2008 /2012 (32-bit & x64-bit)/ 7/8/10 (32-bit & x64-bit) / SBS 2011
Linux	RedHat 8, 9 / RedHat Enterprise AS3, AS5, AS6 (32-bit), AS6 (64-bit), 5.2 (32-bit & 64-bit) / SUSE 10 (32-bit & 64-bit) / Cent OS 5.4 (32-bit & 64-bit) / Ubuntu 8.X, 9.X, 10.X (32-bit), 10.X (64-bit), 12.04 (32-bit & 64-bit) / Mint 14.1 (32-bit & 64-bit) / Fedora 5 / OpenSUSE 11.2 (32-bit & 64-bit) / Debian 5.x, 6.x (32-bit), 6.x (64-bit)
Mac	OS 10.5 / OS 10.6 / 10.7 / 10.8 (x64-bit)
Solaris	10 for x86

Updated versions are downloadable on the website.

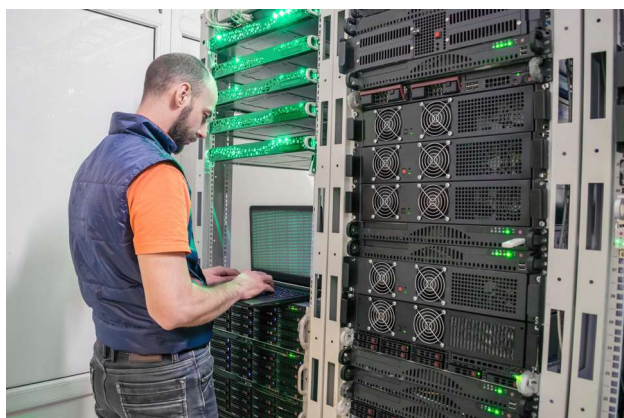
VIRTUAL NETWORK MANAGEMENT

SNMP vm Minislot & RCCMD client software


For On Line UPS in virtual network type vmWare^(R), an SNMP agent associated with client software solution RCCMD allows to manage the start-up and shutdown of virtual server and associated devices.

The Infosec solution is composed of two inseparable elements :

- The Minislot SNMP vm card allows **communication with virtualization devices** (vmWare ©, Hyper V, etc.).
- The RCCMD client software is an appliance (virtual machine) that can be used to **configure and manage the protection of virtual servers protected by an INFOSEC UPS System™** equipped with the SNMP vm Minislot card. An RCCMD client software license accompanies each SNMP vm Minislot card.



Available agents and mode of installation

Internal reference	Model	Visual	Compatibility	Installation type
61142	SNMP vm MiniSlot agent		All UPS	Integrated

Advantages

- **Management of several UPS** on a remote virtual network
- **Monitoring** of the UPS status
- **Setting a closing «clean»** of the running applications and a system and virtual/physical servers shutdown before the end of the back-up time of the UPS in case of power failure
- **Records** data and events
- **Schedule the start-up and shutdown of the UPS**, providing the best possible protection for your information system
- **E-mail communication**, which lets you remotely manage the UPS status.
- **Detection of the temperature and humidity** via connecting to EMD (Environmental Monitoring Device) - *Option*

COMPATIBILITES

These solutions are compatible with : Windows^(R), Linux^(R), Mac^(R), VMWare ESXi^(R) (and older ESX), Microsoft Hypervisor^(R) and CITRIX^(R) environments.

Updated versions are downloadable on the website.



Infosec Communication
 15, rue du Moulin
 44880 SAUTRON - FRANCE
Sales contact
 Tél : 02 40 76 11 77
 sales@infosec.fr

www.infosec-ups.com